

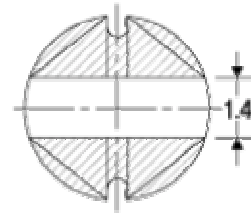
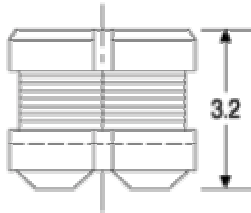
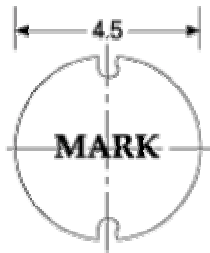
## WPI 4532D SERIES

Frequency range : 0.1uH ~ 10mHz

Inductance range : 1.4uH ~ 1000uH



- . Surface mountable device
- . Low profile
- . Excellent performance & cost effective
- . Tape & reel for auto - placement



Part NO	Inductance $\mu\text{H} \pm \%$	DC Resistance $\text{m}\Omega$ max	Rated Current A max
WPI - 4532D - 1R4M	1.4 $\pm$ 20%	0.04	3
WPI - 4532D - 1R8M	1.8	0.048	2.5
WPI - 4532D - 2R2M	2.2	0.05	2.4
WPI - 4532D - 3R3M	3.3	0.075	1.8
WPI - 4532D - 4R7M	4.7	0.1	1.4
WPI - 4532D - 6R8M	6.8	0.15	1
WPI - 4532D - 100M	10	0.182	0.74
WPI - 4532D - 150M	15	0.290	0.52
WPI - 4532D - 220M	22	0.378	0.48
WPI - 4532D - 330K	33 $\pm$ 10%	0.540	0.32
WPI - 4532D - 470K	47	0.844	0.33
WPI - 4532D - 680K	68	1.2	0.28
WPI - 4532D - 101K	100	1.45	0.26
WPI - 4532D - 151K	150	1.9	0.21

- . Measured at the frequency & 0.05V.
- . Operating temperature range  $-40^{\circ}\text{C}$  to  $+85^{\circ}\text{C}$ .
- . Inductance measured by HP4192A.
- . Inductance drop = 10% typ. at rated current.

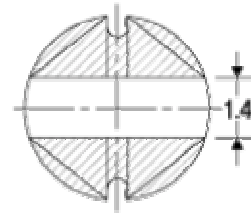
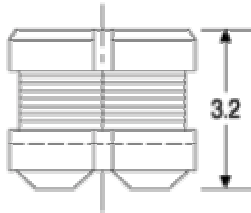
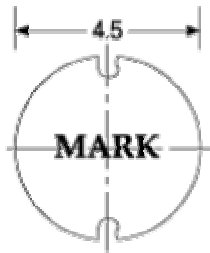
## WPI 4532D SERIES

Frequency range : 0.1uH ~ 10mHz

Inductance range : 1.4uH ~ 1000uH



- . Surface mountable device
- . Low profile
- . Excellent performance & cost effective
- . Tape & reel for auto - placement



Part NO	Inductance $\mu\text{H} \pm \%$	DC Resistance $\text{M}\Omega$ max	Rated Current A max
WPI - 4532D - 221K	$220 \pm 10\%$	2.85	0.16
WPI - 4532D - 331K	330	4	0.145
WPI - 4532D - 471K	470	6.5	0.12
WPI - 4532D - 681K	680	10	0.1
WPI - 4532D - 102K	1000	20	0.075

- . Measured at the frequency & 0.05V.
- . Operating temperature range  $-40^{\circ}\text{C}$  to  $+ 85^{\circ}\text{C}$ .
- . Inductance measured by HP4192A.
- . Inductance drop = 10% typ. at rated current.