

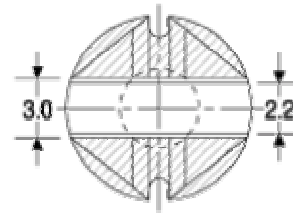
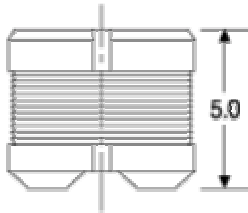
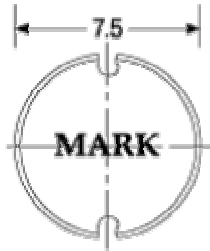
WPI 7550D SERIES

Frequency range : 0.1uH ~ 10mHz

Inductance range : 1.8uH ~ 470uH



- . Surface mountable device
- . Low profile
- . Excellent performance & cost effective
- . Tape & reel for auto - placement



Part NO	Inductance $\mu\text{H} \pm \%$	DC Resistance $\text{m}\Omega$ max	Rated Current A max
WPI - 7550D - 1R8M	1.8 \pm 20%	0.035	3.5
WPI - 7550D - 2R7M	2.7	0.041	3.3
WPI - 7550D - 4R7M	4.7	0.048	3
WPI - 7550D - 6R8M	6.8	0.055	2.7
WPI - 7550D - 8R2M	8.2	0.065	2.5
WPI - 7550D - 100M	10	0.07	2.1
WPI - 7550D - 120M	12	0.075	2
WPI - 7550D - 150M	15	0.08	1.8
WPI - 7550D - 180M	18	0.1	1.6
WPI - 7550D - 220M	22	0.11	1.5
WPI - 7550D - 270M	27	0.13	1.3
WPI - 7550D - 330K	33 \pm 10%	0.14	1.2
WPI - 7550D - 390K	39	0.16	1.15
WPI - 7550D - 470K	47	0.2	1.1

- . Measured at the frequency & 0.05V.
- . Operating temperature range -40°C to $+85^{\circ}\text{C}$.
- . Inductance measured by HP4192A.
- . Inductance drop = 10% typ. at rated current.

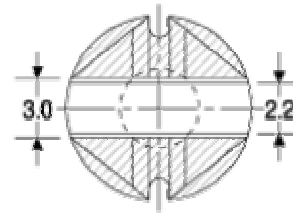
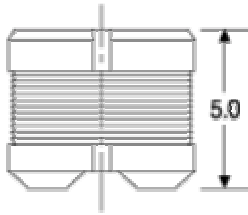
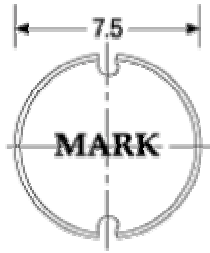
WPI 7550D SERIES

Frequency range : 0.1uH ~ 10mHz

Inductance range : 1.8uH ~ 470uH



- . Surface mountable device
- . Low profile
- . Excellent performance & cost effective
- . Tape & reel for auto - placement



Part NO	Inductance $\mu\text{H} \pm \%$	DC Resistance $\text{m}\Omega$ max	Rated Current A max
WPI - 7550D - 560K	56 \pm 10%	0.24	0.94
WPI - 7550D - 680K	68	0.28	0.85
WPI - 7550D - 820K	82	0.37	0.78
WPI - 7550D - 101K	100	0.44	0.72
WPI - 7550D - 121K	120	0.47	0.67
WPI - 7550D - 151K	150	0.64	0.58
WPI - 7550D - 181K	180	0.80	0.51
WPI - 7550D - 221K	220	0.96	0.49
WPI - 7550D - 271K	270	1.11	0.42
WPI - 7550D - 331K	330	1.26	0.40
WPI - 7550D - 391K	390	1.77	0.36
WPI - 7550D - 471K	470	1.96	0.35

- . Measured at the frequency & 0.05V.
- . Operating temperature range -40°C to $+ 85^{\circ}\text{C}$.
- . Inductance measured by HP4192A.
- . Inductance drop = 10% typ. at rated current.