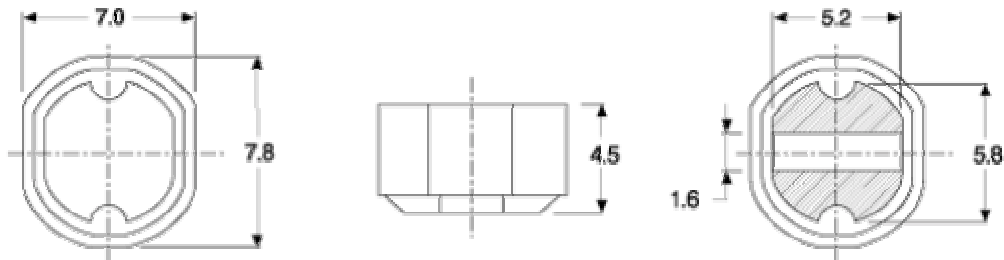


## WPI 7845R SERIES

Frequency range : 0.1uH ~ 10mHz e  
Inductance range : 10uH ~ 470uH



- . Surface mountable device
- . Low profile
- . Excellent performance & cost effective
- . Tape & reel for auto - placement



Part NO	Inductance $\mu\text{H} \pm 20\%$	DC Resistance $\text{M}\Omega$ max	Rated Current A max
WPI - 7845R - 100M	10	0.06	1.40
WPI - 7845R - 150M	15	0.07	1.20
WPI - 7845R - 220M	22	0.1	1
WPI - 7845R - 330M	33	0.15	0.90
WPI - 7845R - 470M	47	0.24	0.75
WPI - 7845R - 680M	68	0.3	0.6
WPI - 7845R - 101M	100	0.4	0.5
WPI - 7845R - 151M	150	0.6	0.4
WPI - 7845R - 221M	220	0.8	0.32
WPI - 7845R - 471M	470	1.5	0.22

- . Tested at 100KHz, 0.05V.
- . Operating temperature range  $-40^{\circ}\text{C}$  to  $+ 85^{\circ}\text{C}$ .
- . Inductance measured by HP4192A.
- . Inductance drop = 10% typ. at rated current.